

24" x 24" x 6"  
THICK CONC. PAD  
TYP. EACH VALVE BOX.

3" DIA. BRONZE DISC  
ANCHORED IN CONC. PAD  
STAMP AS REQ'D  
(SEE NOTE 1)

SIZE OF VALVE

TYPE OF VALVE

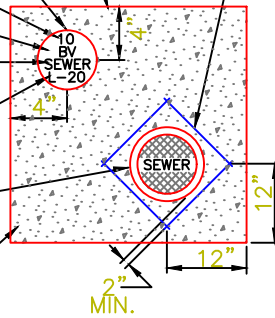
SERVICE

DIRECTION & NO.  
OF TURNS TO  
OPEN

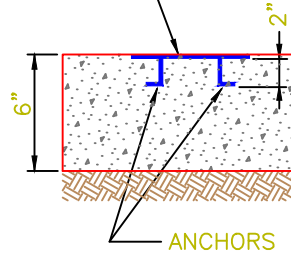
VALVE BOX  
AND COVER  
(TYP.)

2500 P.S.I.  
CONCRETE MIN.

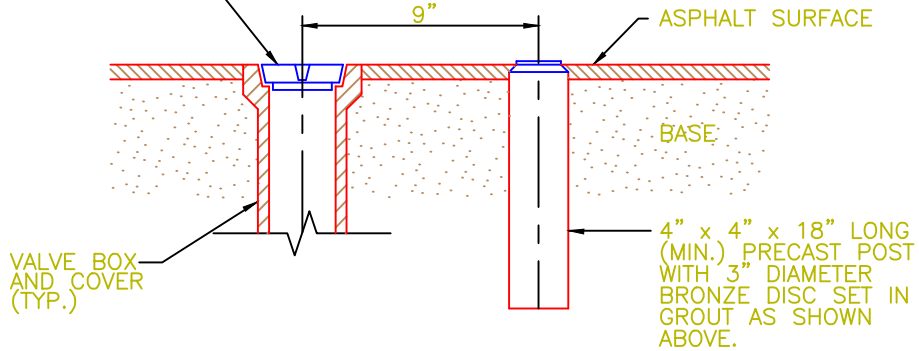
#4 BARS ALL  
AROUND



3" DIA. BRONZE  
DISC ANCHORED IN  
CONC. PAD STAMP  
AS REQ'D.



TOP FLUSH WITH  
FINISHED GRADE



NOTES:

1. BRONZE IDENTIFICATION DISC SHALL BE REQUIRED FOR ALL VALVES 10" AND LARGER, OR AS REQUIRED BY THE ENGINEER FOR CRITICAL OFFSITE VALVES.
2. VALVE COLLAR DIMENSIONS MAY BE REDUCED TO 18" X 18" X 6" WHEN THE BRONZE IDENTIFICATION DISC IS NOT REQUIRED.

VALVE COLLAR DETAIL

NOT TO SCALE

REV	DATE	BY	REVISIONS
1	25 MAR 13	REFJHS	REVISED DETAIL



TECHNICAL  
STANDARDS  
MANUAL

VALVE COLLAR  
DETAIL  
TECHNICAL STANDARDS MANUAL  
CITY OF LYNN HAVEN FLORIDA

CAD FILE:	SEWER
DWN BY:	REF
DATE:	30 APR 07
SHEET NO:	9 OF 20
DETAIL	S-9